

35th Annual Nisqually Watershed Festival

# Poster Contest



## Celebrating the Nisqually Watershed! Saturday, September 28th, 2024

This festival celebrates the environmental, cultural, historical, and economic stories of this unique river basin in South Puget Sound. Students can take part in the awards ceremony as well as a variety of free family-friendly events and activities!

### This year's contest theme is "Salmon of the Watershed"!

Choose your salmon from the following list:

- Chinook/King
- Coho/Silver
- Pink/Humpy
- Chum/Dog
- Steelhead Trout
- Coastal Cutthroat Trout

All poster mediums are welcome: paint, colored pencil, pastel, marker, etc.

The poster must be 8.5x11, 11x17, or 12x18 inches in size.

Any posters with words on the front (including names, labels, signs, etc.) will be **DISQUALIFIED**.

### To submit your poster:

Fill out and glue or tape entry form to the back of the poster.

Mail to:  
Nisqually Watershed Festival Poster Contest  
100 Brown Farm Rd.  
Olympia, Wa 98516

Or Hand Deliver to:  
Billy Frank Jr. Nisqually National Wildlife Refuge  
100 Brown Farm Road  
Olympia, WA 98516  
9AM-3PM in the Admin Office Mon-Fri or  
Visitor Center Sat-Sun

Or Submit Digitally at:  
[nrep.nisquallyriver.org/nisqually-watershed-festival](http://nrep.nisquallyriver.org/nisqually-watershed-festival)

### Submission Deadline: Friday June 7th 2024

For questions, please contact Shelby Anderson at [nisquallyeducation@fws.gov](mailto:nisquallyeducation@fws.gov) (360) 753-9467  
or Julia Fregonara at [julia@nisquallyriver.org](mailto:julia@nisquallyriver.org) or (360) 438-8715 ext. 2155

# How to Design a Poster

The diagram below shows you how to draw a basic salmon. Your salmon might have a different shape or color pattern, but the steps for drawing it will be very similar!

Remember to fill up the entire page! Judges will be looking for original and creative pieces of art. Both realistic and imaginative interpretations are encouraged.

Winning posters are usually very colorful and bright. Think about how you will use color on your salmon and in your background.

Want to download an entry form?

Want to see past winners?

Want to find out more about the contest or the festival?

**Visit**

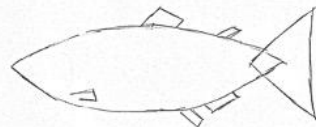
[nrep.nisquallyriver.org/  
nisqually-watershed-festival](http://nrep.nisquallyriver.org/nisqually-watershed-festival)



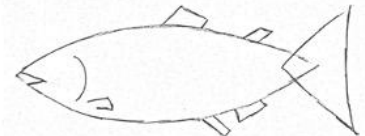
Step 1: Draw a pointed oval



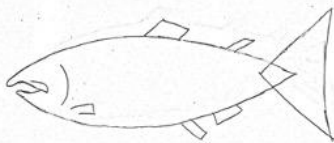
Step 2: Add a triangle for the tail



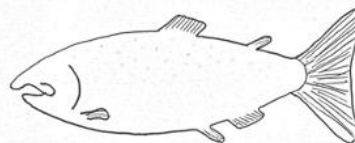
Step 3: Add rectangles for fins



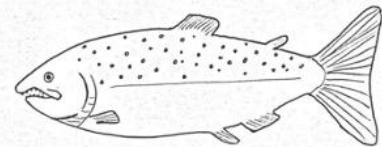
Step 4: Add the gills and remove a small triangle to guide the mouth



Step 5: Using your guide, add detail to the mouth



Step 6: Round the fins and add lines for detail



Step 7: Draw spots, lines, whatever you like to add detail to your salmon!

Once your salmon is complete, don't forget to add a beautiful background!  
Think about how to incorporate color into your art!

## Judging and Awards

5 winners in each grade will receive prizes!

Awards will be presented during the Nisqually Watershed Festival on September 28th, 2024. Winning artwork will be displayed at Billy Frank Jr. Nisqually National Wildlife Refuge during the Festival.

A panel will judge all entries based on **originality** and **expression of theme**. Both realistic and imaginative interpretations are encouraged.

The Best of Show artwork will be used on flyers, brochures, and will be displayed on the festival website!

For questions, please contact Shelby Anderson at [nisquallyeducation@fws.gov](mailto:nisquallyeducation@fws.gov) (360) 753-9467 or Julia Fregonara at [julia@nisquallyriver.org](mailto:julia@nisquallyriver.org) or (360) 438-8715 ext. 2155

# 2024 Nisqually Watershed Festival

## Poster Contest Entry Form

For Digital Submission please visit: [nrep.nisquallyriver.org/nisqually-watershed-festival](http://nrep.nisquallyriver.org/nisqually-watershed-festival)

Fill out teacher and school information before duplicating and distributing to students. Attach form to back of student posters. **Completed entry forms are required** and are used to notify winners.

### Rules:

- Entries must be on 8.5x11, 11x17, or 12x18 inch paper.
- Entries cannot contain **ANY words** on the front (this includes names, labels, titles, etc.)
- Entries must be **ONE** student's original artwork.
- Posters cannot be folded, matted, or framed.
- Posters cannot include copyrighted characters (Pokemon, Spongebob, etc.)

**Entry Deadline:** Friday, June 7th, 2024

**Submission:** Mail entries to Nisqually Watershed Festival Poster Contest, 100 Brown Farm Rd, Olympia, WA 98516 or Hand Deliver to Billy Frank Jr Nisqually National Wildlife Refuge, 100 Brown Farm Rd, Olympia WA 98516 from 9AM-3PM in either the Admin Office Mon-Fri or Visitors Center Sat-Sun.

Teacher: \_\_\_\_\_

School: \_\_\_\_\_

Grade (circle one):            K                    1                    2                    3                    4                    5

Student Name: \_\_\_\_\_

Poster Title: \_\_\_\_\_

Home phone number (this is how winners will be notified!): \_\_\_\_\_

Home Email (this is how winners will be notified!): \_\_\_\_\_

*I hereby certify that this is the original work of my student/child, and is not a copy of published photographs, magazines, book illustrations, or other materials protected by copyright laws. I grant exclusive right to the U.S. Fish and Wildlife Service and its designees to utilize this artwork for reproduction and promotional purposes, and to display my art; also I agree that this artwork may be used, altered, or published as they see fit without compensation.*

Signature of Adult: \_\_\_\_\_

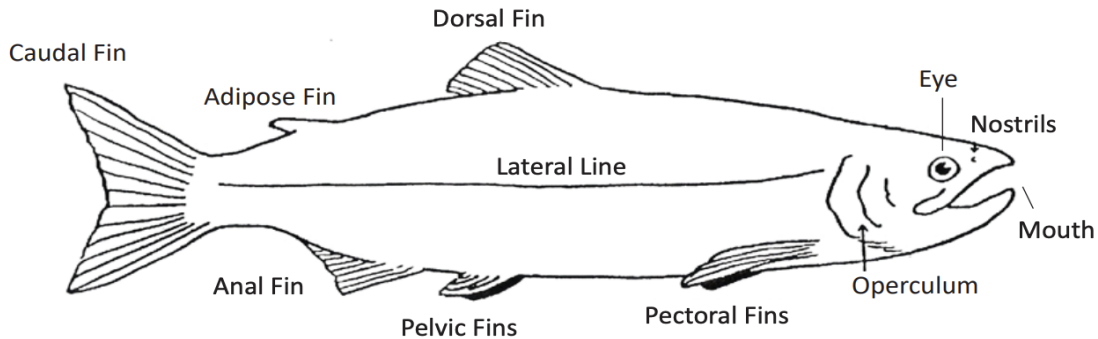
For questions, please contact Shelby Anderson at [nisquallyeducation@fws.gov](mailto:nisquallyeducation@fws.gov) (360) 753-9467  
or Julia Fregonara at [julia@nisquallyriver.org](mailto:julia@nisquallyriver.org) or (360) 438-8715 ext. 2155

# 2024 Nisqually Watershed Festival

## Salmon of the Watershed Information

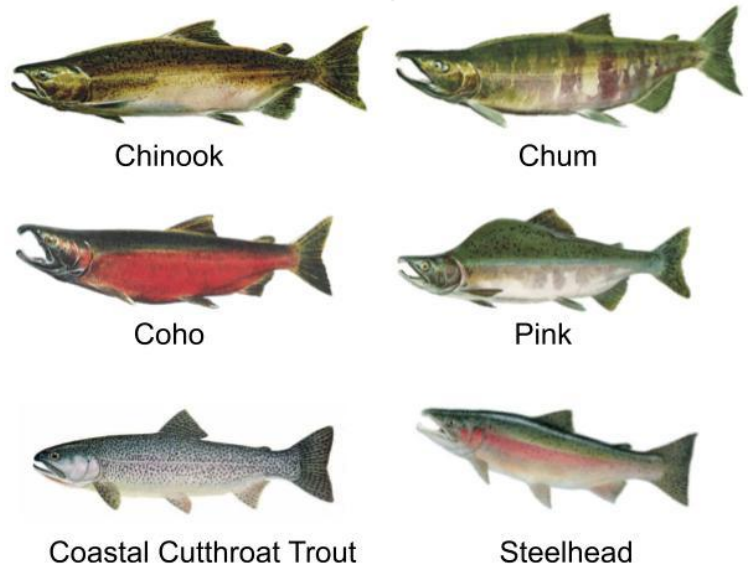
### What are salmon?

Salmon are fish in the Salmonidae family that are **anadromous**, meaning that they hatch in freshwater rivers and streams, swim out to the ocean to feed and grow, and then return to freshwater to spawn (have babies). After spawning, most adult salmon die.



### Why are salmon important?

Salmon are a keystone species in the Pacific Northwest. When they die after spawning in freshwater streams, their carcasses provide a very important source of marine-derived nutrients for plants and animals. Throughout a salmon's life cycle, many animals eat them, including birds, larger fish, seals, and orca. Over 137 species depend on salmon and they nourish ecosystems from California to Alaska, including the Nisqually watershed.



### 6 Salmon Species of the Nisqually Watershed

The Nisqually River and its creeks and tributaries provide habitat for six species of salmon: Chinook, pink, coho, chum, coastal cutthroat trout, and steelhead trout.

### More Information

<https://nrep.nisquallyriver.org/wp-content/uploads/sites/3/2023/11/Salmon-Guide-updated-for-printing.pdf>

<https://www.fisheries.noaa.gov/west-coast/sustainable-fisheries/salmon-life-cycle-and-seasonal-fishery-planning>

<https://spsseq.org/meet-the-7-species-of-pacific-salmon/> [NOTE: there are no Sockeye in the Nisqually Watershed]

Salmon Reference images:

[https://docs.google.com/presentation/d/1\\_dloRCCcSV8DVUuT6hxlTnV7ycR9mT6p8dZnscucu30/edit?usp=share\\_link](https://docs.google.com/presentation/d/1_dloRCCcSV8DVUuT6hxlTnV7ycR9mT6p8dZnscucu30/edit?usp=share_link)

For questions, please contact Shelby Anderson at [nisquallyeducation@fws.gov](mailto:nisquallyeducation@fws.gov) (360) 753-9467 or Julia Fregonara at [julia@nisquallyriver.org](mailto:julia@nisquallyriver.org) or (360) 438-8715 ext. 2155



# Nisqually Watershed Festival Poster Contest

## Rules and Tips

### Rules:

- Posters can only be 8.5x11, 11x17, or 12x18 inches.
- **No words!** This means no titles, labels, or names can be on the front of the poster.
- Include only species native to the Nisqually Watershed. (See information page)
- Entries must be **one** person's original creation.
- Do not frame, mat or fold the posters.
- Poster designs cannot incorporate any copyrighted character such as comic and/or TV, magazine, or newspaper illustration (ex: SpongeBob, Pokemon, etc.)

### Tips for a great poster!

- Judging is based on **originality** and **expression of theme**. Think about how to make your poster stand out from others!
- Judges will be considering how this image will look when resized (smaller) and made black and white, both of which may happen to make copies of flyers for the festival.
- Avoid putting too many elements on the poster. Try looking at your poster from a few steps away to be sure the subject is big and clear.
- The image should fill up the whole paper; make sure to add a beautiful background and not just leave the background empty.
- Winning posters usually have lots of bright colors, a clear subject that takes up a lot of the poster, and have little to no empty space. If you want to see what the winning posters have looked like in past years, check out our website at:  
[nrep.nisquallyriver.org/nisqually-watershed-festival](http://nrep.nisquallyriver.org/nisqually-watershed-festival)
- Have fun!



For questions, please contact Shelby Anderson at [nisquallyeducation@fws.gov](mailto:nisquallyeducation@fws.gov) (360) 753-9467 or Julia Fregonara at [julia@nisquallyriver.org](mailto:julia@nisquallyriver.org) or (360) 438-8715 ext. 2155