

Dear Educators,

It's time for the Annual Nisqually Watershed Festival Poster Contest! All participating teachers will be entered into a drawing for a FREE trip to Billy Frank Jr. Nisqually National Wildlife Refuge!

The 32nd Nisqually Watershed Festival will take place on Saturday, September 25, 2021. This event celebrates the environmental, cultural, historical, and economic stories of this unique river basin in South Puget Sound. On the day of the festival students can take part in the awards ceremony as well as a variety of free family-friendly events and activities.

**The deadline for the entries is Friday, June 11th 2021.** Every poster entered will be displayed throughout the festival. Judges choose the top five posters from each grade and these students are presented with a certificate and prize during a public ceremony during the Festival.

## This year's theme is **"Mammals of the Watershed"**.

Here's a link to a great video about how to make a Poster Contest entry: <https://youtu.be/MWib-VGi1jc>

This year's theme has changed, but the tips are just as great!

Included are the contest flyer, the official entry form, mammal list, and design criteria. Entries can be submitted through mail, drop-off, or online. See page 2 for instructions. If you need any extra assistance to make participation possible, please be in touch. We look forward to displaying your entries!

*2018 Best In Show*

*Sydney Skavlem*

*Olympic Elementary*



**For questions please contact:**

Davy Clark (360)753-9467 [david\\_r\\_clark@fws.gov](mailto:david_r_clark@fws.gov) • April Roe (360)459-0387 [aprilroe@nisquallyestuary.org](mailto:aprilroe@nisquallyestuary.org)  
Sheila Wilson (360)438-8715 [sheila@nisquallyriver.org](mailto:sheila@nisquallyriver.org)

# 2021 Nisqually Watershed Festival Poster Contest

## Grade Levels:

1<sup>st</sup>—6<sup>th</sup>

## Theme:

Mammals of the Watershed

## Medium:

Your choice! Only the following sizes can be accepted: 8.5x11, 11x17, 12x18 inch. Traditional and digital mediums accepted. **No words**

## Entry:

You may enter your art using the physical entry form (page 3) or by using the [Digital Submission Form](#) (Note: google account required - if you do not have a google account you may also email your entries directly to [julia@nisquallyriver.org](mailto:julia@nisquallyriver.org))

## Identification:

If you plan to submit an entry by mail or drop-off simply copy the entry form, fill it out, and attach it to the back of each poster. Entries may also be submitted digitally at:

***A Complete entry form is necessary for notifying winners!***

## Judging:

A panel of judges will judge all entries with equal weight given to originality and execution of theme. Both realistic and imaginative interpretations are encouraged. Entries must be received by Friday, June 11th, 2021.

## Prizes:

Awarded to the 1<sup>st</sup>, 2<sup>nd</sup>, and 3<sup>rd</sup> place winners along with 2 "Honorable Mentions" in each grade. "Best in Show" will be used for festival publicity. All entries will be displayed during the festival.

## Awards:

Presented during the **Nisqually Watershed Festival, Saturday, September 25, 2021.**

All participating teachers will be entered in a drawing for a FREE trip to Billy Frank Jr. Nisqually National Wildlife Refuge!



*2019 Best In Show*

*Charlotte Millar*

**For questions please contact:**

Davy Clark (360)753-9467 [david\\_r\\_clark@fws.gov](mailto:david_r_clark@fws.gov) • April Roe (360)459-0387 [aprilroe@nisquallyestuary.org](mailto:aprilroe@nisquallyestuary.org)  
Sheila Wilson (360)438-8715 [sheila@nisquallyriver.org](mailto:sheila@nisquallyriver.org)

# 2021 Nisqually Watershed Festival Poster Contest

## Physical Entry Form

For Digital Submission please visit: <https://nrep.nisquallyriver.org/other-teacher-resources/nisqually-watershed-festival/>

Fill out teacher and school information before duplicating and distributing to students. Attach to back of student posters. Complete entry forms required and are used to notify winners.

Entries will be displayed at the Nisqually Watershed Festival on **Saturday, September 25, 2021.**

**Entry deadline:** Received by **Friday, June 11th 2021** \_\_\_\_\_

**Mail or deliver entries to:**

Nisqually Watershed Festival Poster Contest  
attn: Davy Clark  
100 Brown Farm Rd Olympia, WA 98516

Teacher: \_\_\_\_\_

School: \_\_\_\_\_

Grade: \_\_\_\_\_

Poster Title: \_\_\_\_\_

Student Name: \_\_\_\_\_

Home Telephone: \_\_\_\_\_

Home E-mail: \_\_\_\_\_

I hereby certify that this is my original work, and is not a copy of published photographs, magazines, book illustrations, or other materials protected by copyright laws. I grant exclusive right to the U.S. Fish and Wildlife Service and its designees to utilize my artwork for reproduction and promotional purposes, and to display my art; also I agree that my artwork may be used, altered, or published as they see fit without compensation to me.

Signature of Student: \_\_\_\_\_

Signature of Parent or Teacher: \_\_\_\_\_

**For questions please contact:**

Davy Clark (360)753-9467 [david\\_r\\_clark@fws.gov](mailto:david_r_clark@fws.gov) • April Roe (360)459-0387 [aprilroe@nisquallyestuary.org](mailto:aprilroe@nisquallyestuary.org)  
Sheila Wilson (360)438-8715 [sheila@nisquallyriver.org](mailto:sheila@nisquallyriver.org)

# Nisqually Watershed Festival Poster Contest 2021

## Mammal List

### What is a mammal?

A mammal is an animal that breathes air, has a backbone & grows hair at some point during its life. Mammals include a wide variety of animals, from cats to humans to whales. There are more than 5,000 species, or kinds, of living mammal.

### What mammals live in the Nisqually Watershed?

There are many Mammals that use the Nisqually Watershed at some time throughout the year. The list provided here includes native mammals that might be seen in the Nisqually Watershed.

|                |   |
|----------------|---|
| Tree Climbers: | Common Porcupine, Raccoon, Douglas Squirrel, Northern Flying Squirrel   |
| Sprinters:     | Black Bear, Bobcat, Cougar, Coyote, Red Fox, Cascade Red Fox, Fisher, American Marten, Mink, Striped Skunk, Western Spotted Skunk, Long-tailed Weasel, Short-tailed Weasel, Snowshoe Hare, Black-tailed Deer, Elk, Mountain Goat, Wolverine |
| Burrowers:     | Pika, Mountain Beaver, Hoary Marmot, Pocket Gopher*, Mouse*, Chipmunk*, Golden-mantled Ground Squirrel, Vole*, Shrew*   |
| Swimmers:      | River Otter, American Beaver, Common Muskrat, Harbor Seal, California Sea Lion, Steller Sea Lion, False Killer Whale, Orca, Porpoise*, Bottle-nosed Dolphin, Gray Whale, Minke Whale  |
| Flyers:        | Big Brown Bat, Hoary Bat, Little Brown Bat, Long-legged Bat, Silver-haired Bat, Townsend's Big-eared Bat, Yuma Bat, Long-eared Myotis   |

Animals marked with \* include many species within that group. If you are interested in finding out more about a particular species within that group, call or email us!

### Where can I find out more about mammals?

- [DK Find Out - Mammals](#)
- [Kids Britannica](#)
- [Mammals of Mount Rainier National Park](#)

For questions please contact:

Davy Clark (360)753-9467 [david\\_r\\_clark@fws.gov](mailto:david_r_clark@fws.gov) • April Roe (360)459-0387 [aprilroe@nisquallyestuary.org](mailto:aprilroe@nisquallyestuary.org)  
Sheila Wilson (360)438-8715 [sheila@nisquallyriver.org](mailto:sheila@nisquallyriver.org)

# Nisqually Watershed Festival Poster Contest

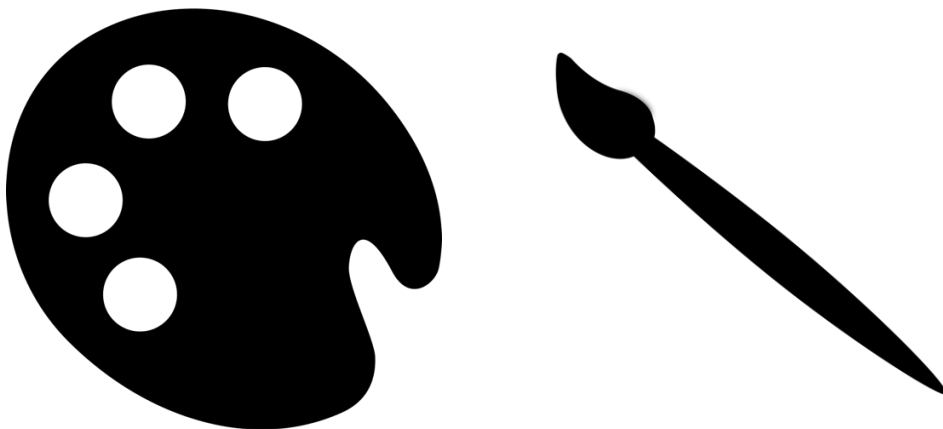
## Design Do's and Don'ts

### Do's:

- Posters should be 8.5x11 or 11x17 or 12x18 inches.
- Judging is based on **originality and execution of theme.**
- Include only species native to the Nisqually Watershed
- Entries must be one person's original creation.
- Judges will be considering how this image will look when resized (smaller) and made black and white, both of which may happen to make copies of fliers for the festival.
- The image should fill up the whole paper.
- Posters should make a clear, uncluttered statement.
- Have fun!

### Don'ts:

- No words (Do not include any words on the front of your poster, this includes your name, labels, signage, etc)
- Do not frame, mat or fold the posters.
- Avoid putting too many elements on the poster.
- Poster designs may not incorporate any copyrighted character such as comic and/or TV, magazine, or newspaper illustration (ex: SpongeBob, Pokemon, etc.)



For questions please contact:

Davy Clark (360)753-9467 [david\\_r\\_clark@fws.gov](mailto:david_r_clark@fws.gov) • April Roe (360)459-0387 [aprilroe@nisquallyestuary.org](mailto:aprilroe@nisquallyestuary.org)  
Sheila Wilson (360)438-8715 [sheila@nisquallyriver.org](mailto:sheila@nisquallyriver.org)